

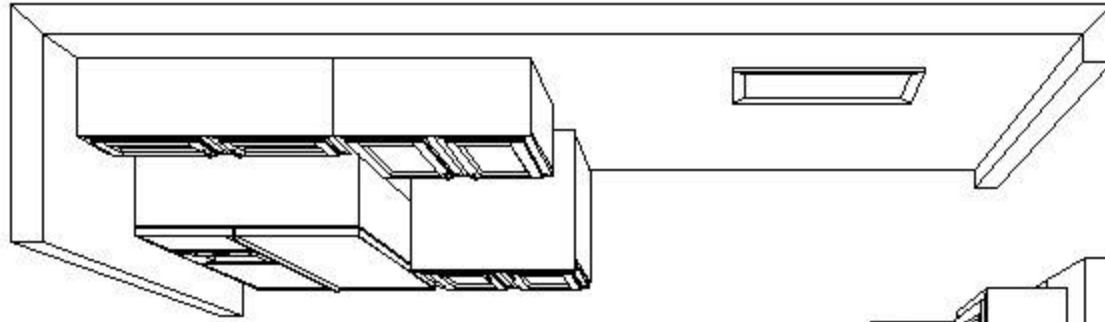
# Wellborn 2010-2011 Design Contest Entry

Entry ID: 100256

#	Customer	Entry	Designer	Photographer
1	0001002490 UPTOWN CABINETS LLC	100256	Brenda Ramirez brenda@uptowncabinets.net 407-687-1458	Uptown cabinets brenda@uptowncabinets.net 407-687-1458 Owner: Entrant
<b>Project</b>		<b>Project Details</b>		<b>Project Date</b>
Simple Elegant		Small Kitchen (<42 sqft of CounterTops) Type: Remodel Size:10 x 11		01/2011
<b>Series</b>	<b>Door Style</b>	<b>Species</b>	<b>Finish</b>	
Select	Harvest Square	Cherry	Medium	
<b>Description</b>				
<p>My clients were considering upgrading to a larger home, like so many people in today's economy, investing into their existing home was a safer option. The issues the Harris' had with their existing kitchen was the layout, storage issues, and it was just ugly! The traffic flow thru the kitchen was not functional. The Harris' also needed more storage and countertop space. Finally, the old cabinets and lighting were out dated.</p> <p>We addressed the traffic flow first. There was a doorway into the living room which was unnecessary and interrupted the cabinetry. By closing up the door way, we were able to move the range away from the corner, giving the cook more elbow room. We removed the bulky peninsula and added a center island so traffic could flow two ways.</p> <p>Storage was a big issue. We removed the soffit which allowed us to gain 6" in wall cabinet height. We utilized the former "blocked out" corner space with a lazy susan, and a large corner angle wall cabinet. a 48" wall cabinet was added above the sink for Holiday plates to be stored but not forgotten. We added a large pots and pans cabinet to the new island, and full height doors to the other island cabinet for storage of taller pots. Roll out rays were added to the pantry cabinet so finding items was quick and easy. Other storage solutions added were the spice pull out base cabinet, a tilt out tray in the sink cabinet, 24" deep refrigerator cabinet, and base cabinets with two deep bottom drawers.</p> <p>Our clients loved the look of Cherry wood, even though their space was small, and did not have much lighting. So we really needed to update the lighting as well. We added recessed lighting, two large pendent lights, and top and bottom wall cabinet lights. This helped us choose the Medium finish, which is a elegant and classic cherry finish. Because of their busy lifestyles, we choice the Harvest door style, Harvest has a rich "raised panel" look, but has few grooves for easy cleaning. Cost was a concern, so selecting Harvest in the Select Series kept her price conservative. Upgrading her drawers to the full extension soft close drawer guides allows her to show off at parties! Decorative base molding, FBM, was added to the base of the island to give it a finished and furniture look. We only "skinned" the back of the island, but with all the extras we added, it was not necessary to add any more "bling" to the layout. And again, easy to clean!</p> <p>We completed her project with small light rail molding to conceal the lights, and coordinating wall tiles.</p>				



**NOT ENOUGH STORAGE AND COUNTERTOP SPACE**



**STOVE IS TOO CLOSE TO CORNER**

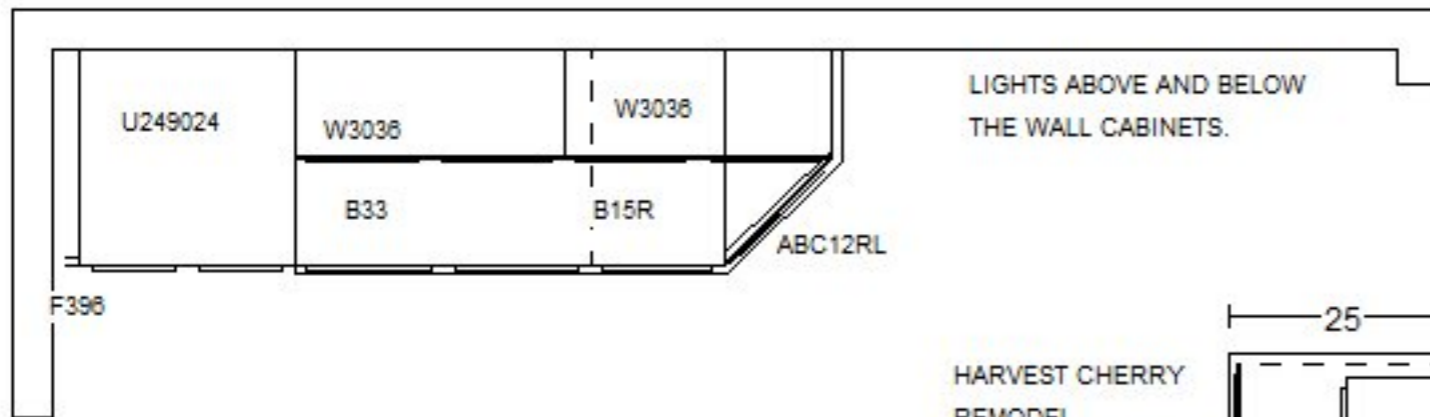
**WASTED CORNER SPACE**

**DOORWAY NOT USED**

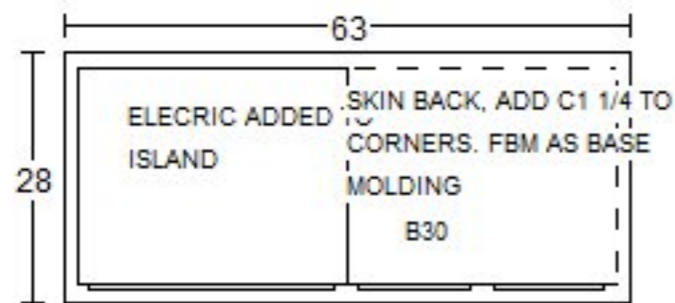
**EXTRA CABINET STORAGE ADDED ABOVE WINDOW**



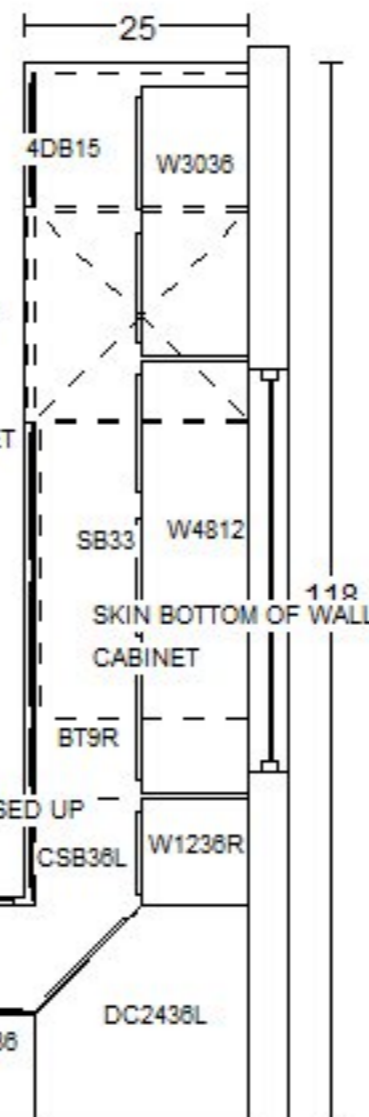
**9" SPICE PULL OUT  
LAZY SUSAN CORNER CABINET**



LIGHTS ABOVE AND BELOW THE WALL CABINETS.



HARVEST CHERRY REMODEL  
UPTOWN CABINETS  
590 RINEHART RD.  
LAKE MARY, FL. 32748  
407-333-4362  
407-333-4363 FAX  
UPTOWNCABINETS.NET



PENINSULA TO BE REMOVED

SCVM8 AS CROWN

DOOR TO BE CLOSED UP

