

Wellborn 2010-2011 Design Contest Entry

Entry ID: 100331

#	Customer	Entry	Designer	Photographer
1	0001001880 Euro Custom Cabinets	100331	Crystal Kennedy crystal@pacificnwcabinetry.com 503.652.1268	Photo Art Portraits info@photoartportraits.com 503.891.9354 Owner: Entrant
Project	Project Details		Project Date	
Claspill	Large Kitchen (>42 sqft of Countertops) Type: Remodel Size:208 x 116		07/2011	
Series	Door Style	Species		Finish
Premier	Hanover	Cherry		Light
Description				
<p>This couple's 1980's remodeled kitchen just didn't fit with the Craftsman style they had always wanted in the space. The main level was divided into small enclosed spaces, many of which went unused, which didn't work at all when they entertained. So when they decided it was time to remodel, they were open to changing things up -</p> <p>Problems/Challenges:</p> <ul style="list-style-type: none"> -Cramped small space with separate cramped dining room -Not enough seating -Cluttered countertop -The entry to the home was also too tight -Rooms all lacked adequate lighting -Their space was dated, and didn't reflect the Craftsman style they wanted -Both like to cook, but there wasn't enough room. Wanted 2 ovens <p>Solutions:</p> <ul style="list-style-type: none"> -Removed walls to the dining room and hallway to open up space entirely -Extended kitchen in to existing dining room and moved the formal dining room to the unused second 'family' room -Wrapped the structural posts that had to stay in painted wood trim to mirror the craftsman style -Wellborn Hanover Cherry Light cabinetry that beautifully reflected the refined Craftsman style they were after -Added an island with a cook top and raised seating to allow for entertaining on outside of kitchen, the white painted wainscoting and trim tied together the period woodwork throughout the space. A downdraft behind the cook top to keep the space feeling open -A built in microwave at comfortable height outside of main work area so rest of family can stay out of the cook's way -Aventos top hinge door for appliance garage to allow easy access to space for mixer, and other small appliances, keeping them out of sight -Spice drawer to keep them accessible, but unseen -Peg board for plates and bowls 				

- Gridded glass in upper doors for a beautiful focal point and extra lighting
- Blind corner pullout for better use of storage in deep corner
- 2 bin wastebasket pullout with servodrive motor for hands free disposal of garbage and recycling
- Honed black granite countertops provided a traditional soapstone look but with much more durability
- Full height tile backsplash provided a beautiful focal point
- Solid oak floors
- Faux box beams in ceiling to separate the kitchen from the rest of the space and provide architectural interest
- Changed height of dining room window to accommodate countertop
- Updated lighting and appliances, including a double oven

The finished space is a wonderful open floorplan with a warm Craftsman feel and space for everyone to gather.

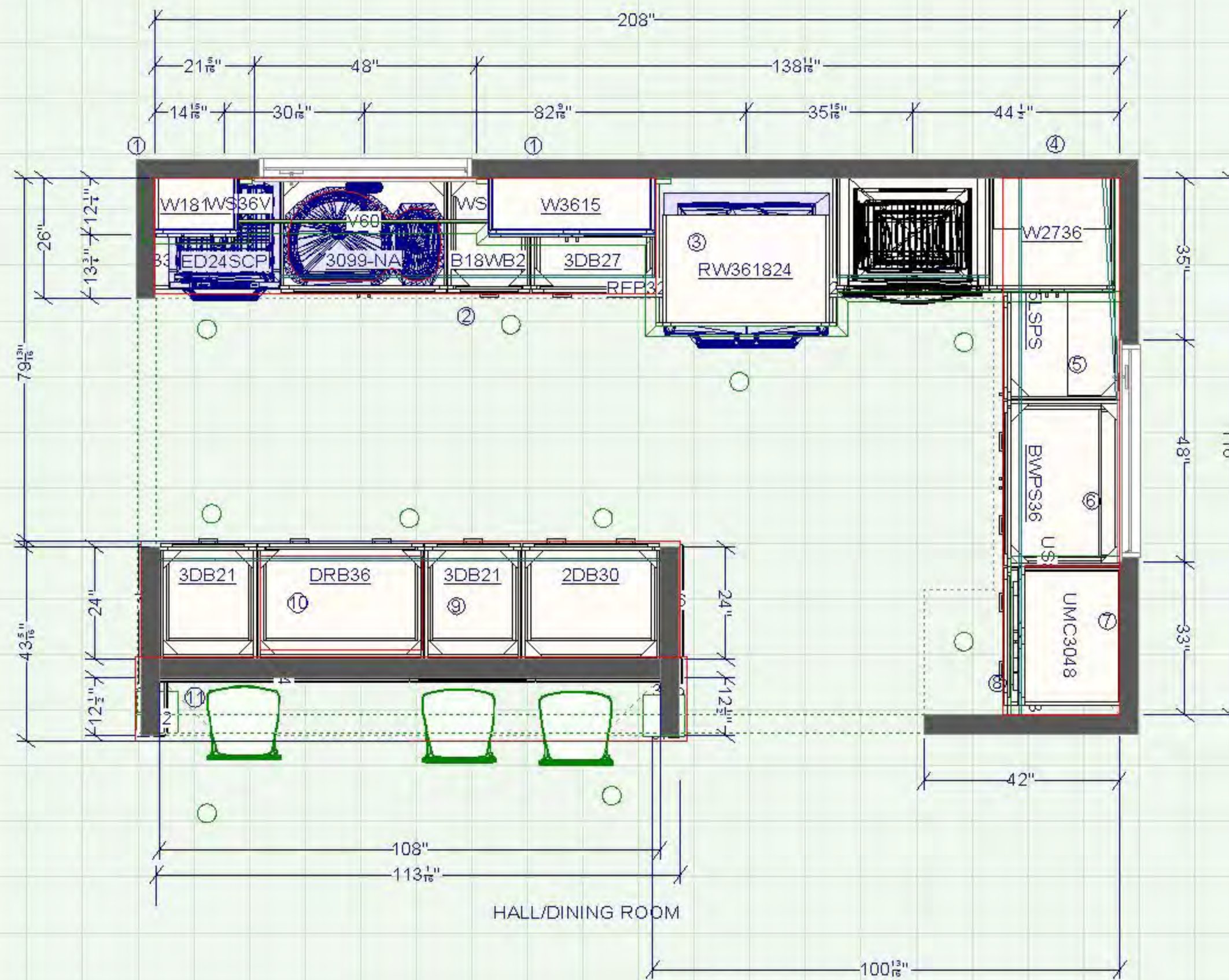












- 1-Glass in upper grid doors
- 2-2 bin waste basket w/ servodrive
- 3-RW3618 Finished interior cab
- 4-W2736 increase depth 24 w2718 increase depth 24 w/ Aventos appliance garage
- 5-Blind corner pullout unit
- 6-2 pullouts
- 7-Built in microwave Cabinet 21" deep
- 8-Drawer with peg organizer for plates
- 9-Spice drawer
- 10-Modify drawers for downdraft and cooktop
- 11-42" H countertop - supported with white painted corbels

LIVING ROOM

EXTERIOR

HALL/DINING ROOM



12:35
1 2 3 4 5
6 7 8 9 0
LOWER OVEN
Bake Broil
Warm Keep Warm
Cooking Time
Pre-Heat
Cancel











