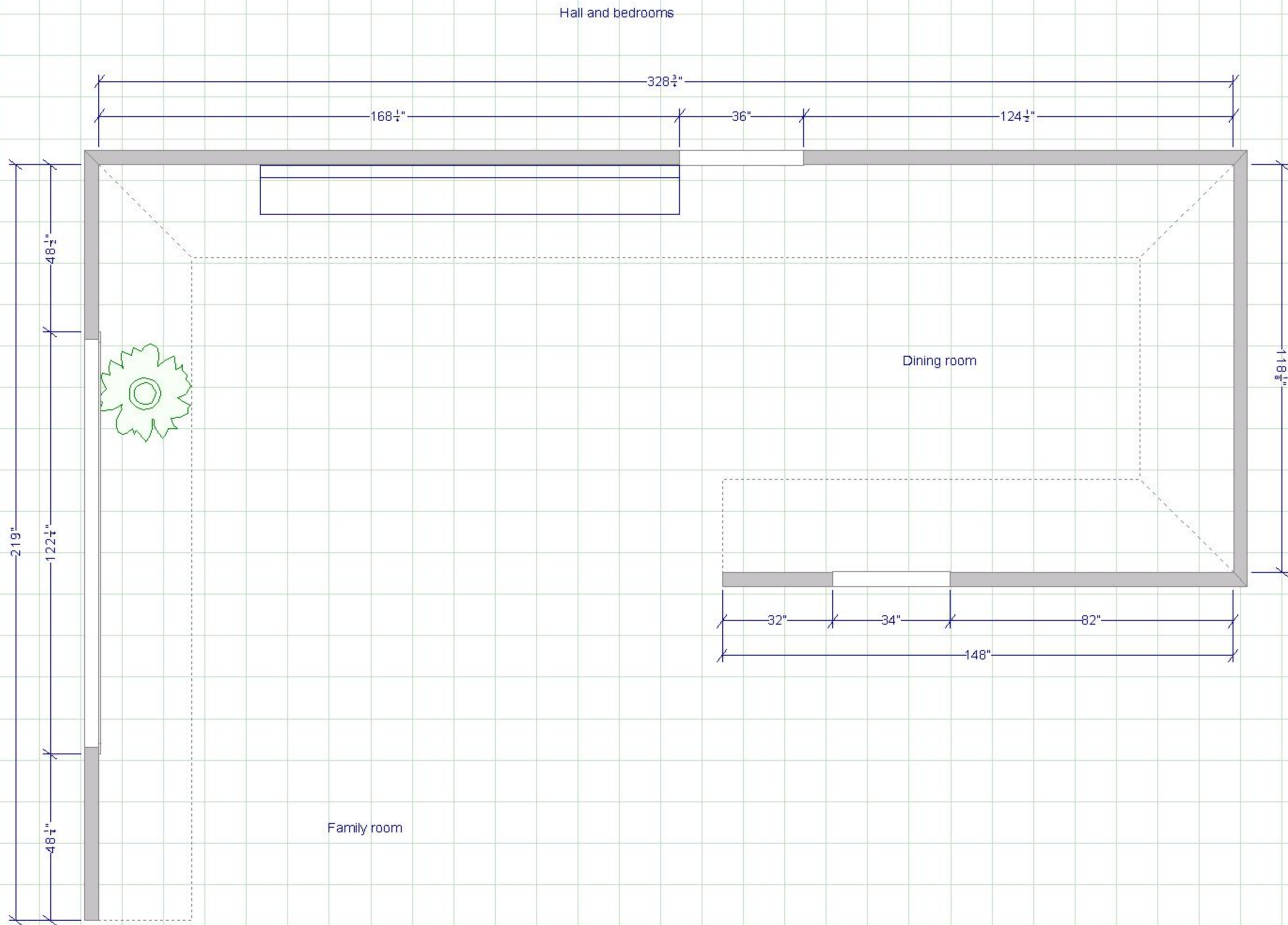


Wellborn 2010-2011 Design Contest Entry

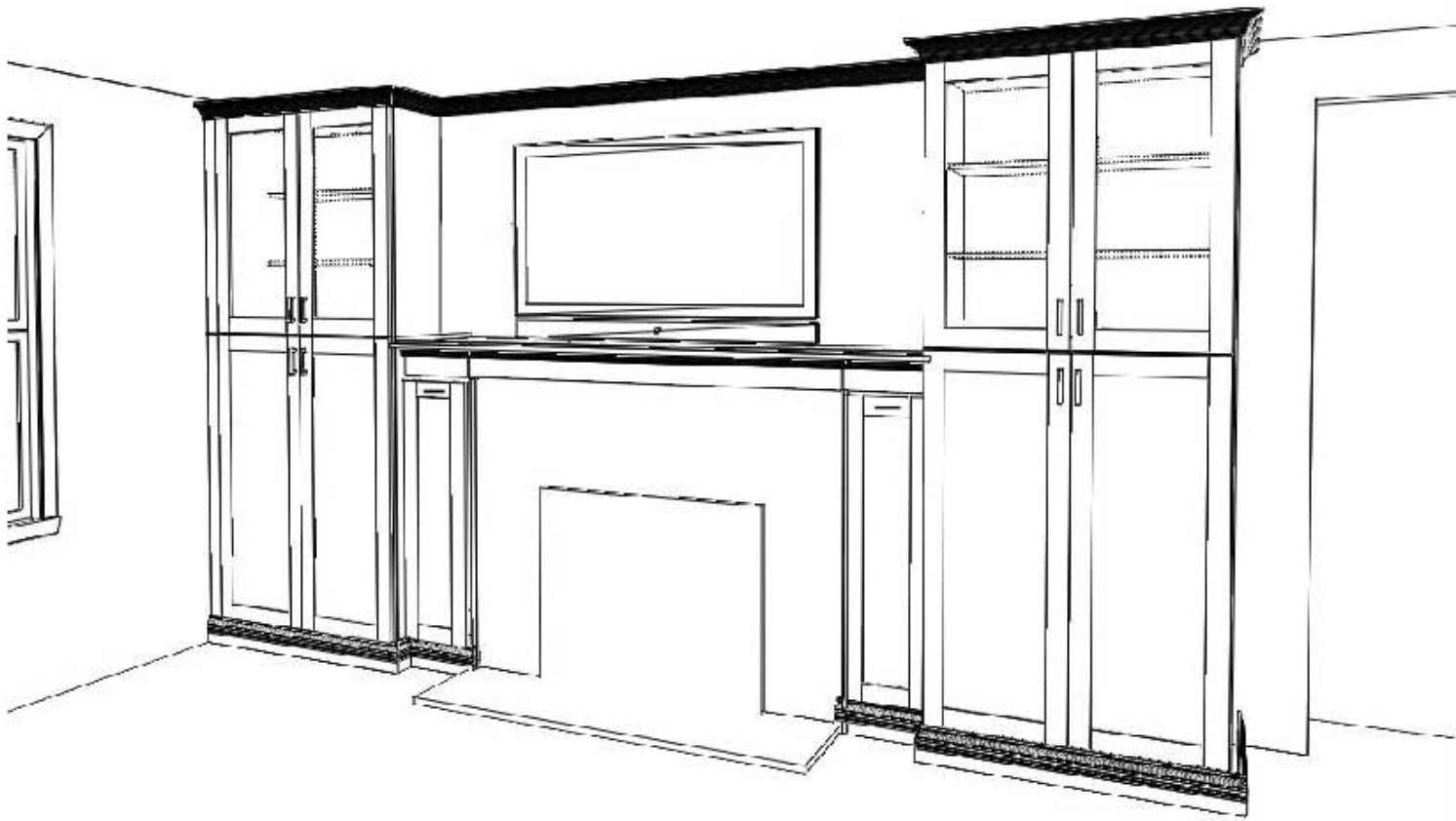
Entry ID: 100329

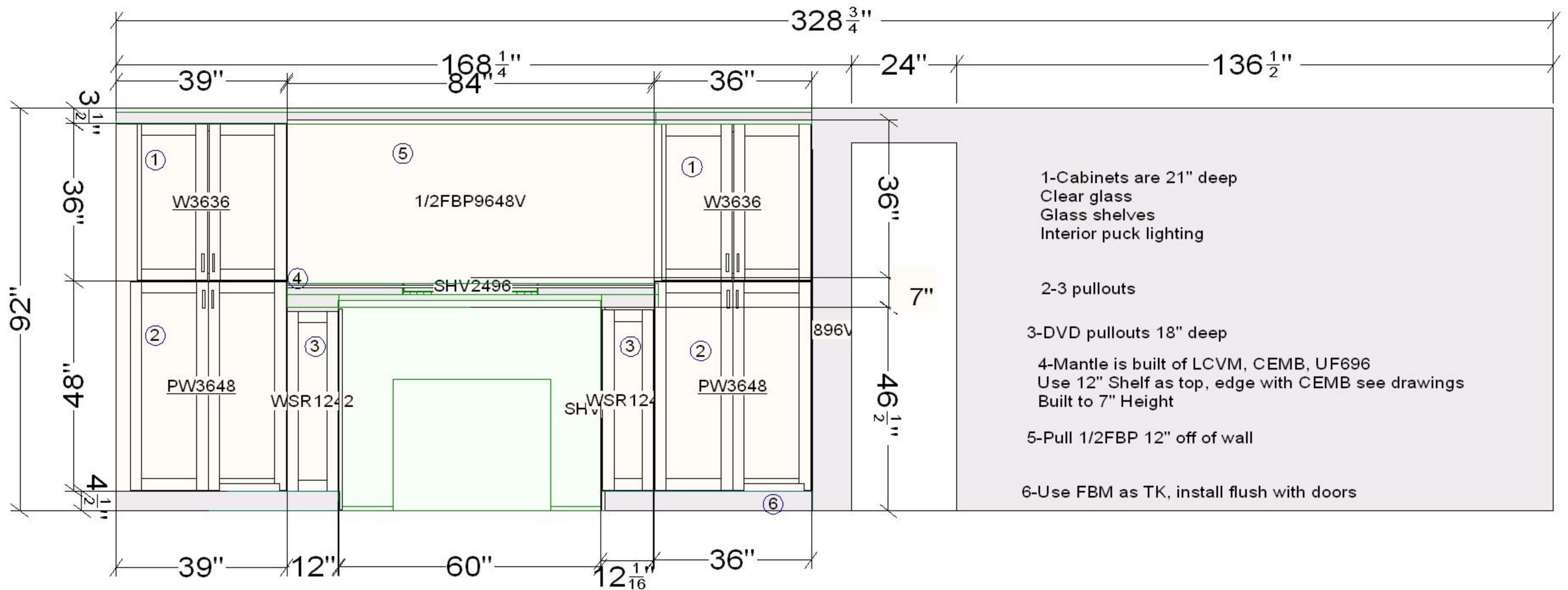
#	Customer	Entry	Designer	Photographer
1	0001001880 Euro Custom Cabinets	100329	Crystal Kennedy crystal@pacificnwcabinetry.com 503.652.1268	Photo Art Portraits info@photoartportraits.com 503.891.9354 Owner: Entrant
Project		Project Details		Project Date
Mathisen		Other Rooms Type: Remodel Size: 168 x 219		09/2010
Series	Door Style	Species		Finish
Premier	Hanover	Oak		Sable
Description				
<p>This couple came to us wanting a complete redesign of their fireplace and mantle. Their existing fireplace and hearth was large and bulky and dated, and was at the center of their home. Their living room also felt dark and the carpet was hard to keep looking pristine with dogs and kids. They wanted something lower maintenance. The brick surround was dated and oversized; the space around it was too small to fit the desired size entertainment center and TV and didn't allow for storage. To house the family games, dvd's and electronics they had an assortment of different furniture pieces that didn't quite fit together. They also wanted an actual mantle to sit above the fireplace to stockings on and decorate. The final space was to incorporate extra storage games and also for DVD's, house their large flat screen TV, have a new efficient gas fireplace, have a place for display. To achieve this and a more updated look we :</p> <ul style="list-style-type: none"> -Got rid of Brick hearth and façade -Installed a new efficient gas fireplace -built out wall to house new firebox -Used Wellborn Hanover Sable Oak cabinetry to create the furniture and Mantle, giving them ample storage with a beautiful built in look. Mission knobs complimented the cabinetry style -Installed clear glass in cabinet doors with glass shelving and lighting allow for display -Added pullouts in the deeper cabinets for board game storage -Added pullouts on either side of the fireplace for DVD's the depth of the firebox, Allowing for a flush look -New tile hearth and fireplace surround -New can lighting to evenly illuminate the space -Added new oak hardwood floors throughout <p>Their finished space is updated, clean and well lit. And a perfect place to enjoy family game and movie night!</p>				











1-Cabinets are 21" deep
 Clear glass
 Glass shelves
 Interior puck lighting

2-3 pullouts

3-DVD pullouts 18" deep

4-Mantle is built of LCVM, CEMB, UF696
 Use 12" Shelf as top, edge with CEMB see drawings
 Built to 7" Height

5-Pull 1/2FBP 12" off of wall

6-Use FBM as TK, install flush with doors

- 1-PULLOUTS IN W3642 DEPTH 21"
- 2-W3636 FINISHED INTERIOR DEPTH 21"
CLEAR GLASS DOORS, GLASS SHELVES
AND LED PUCK LIGHTS
- 3-W1242 WITH PULLOUTS FOR DVD'S 18" DEEP
- 4-MANTLE 6" DEEP AND 7" TALL
USING LCVM8, UF396, CEMB BUILDUP
- 5-USE 1/2FBP AS WOOD BACK BETWEEN CABINERY
BLOCK OUT 12" FROM BACK WALL

