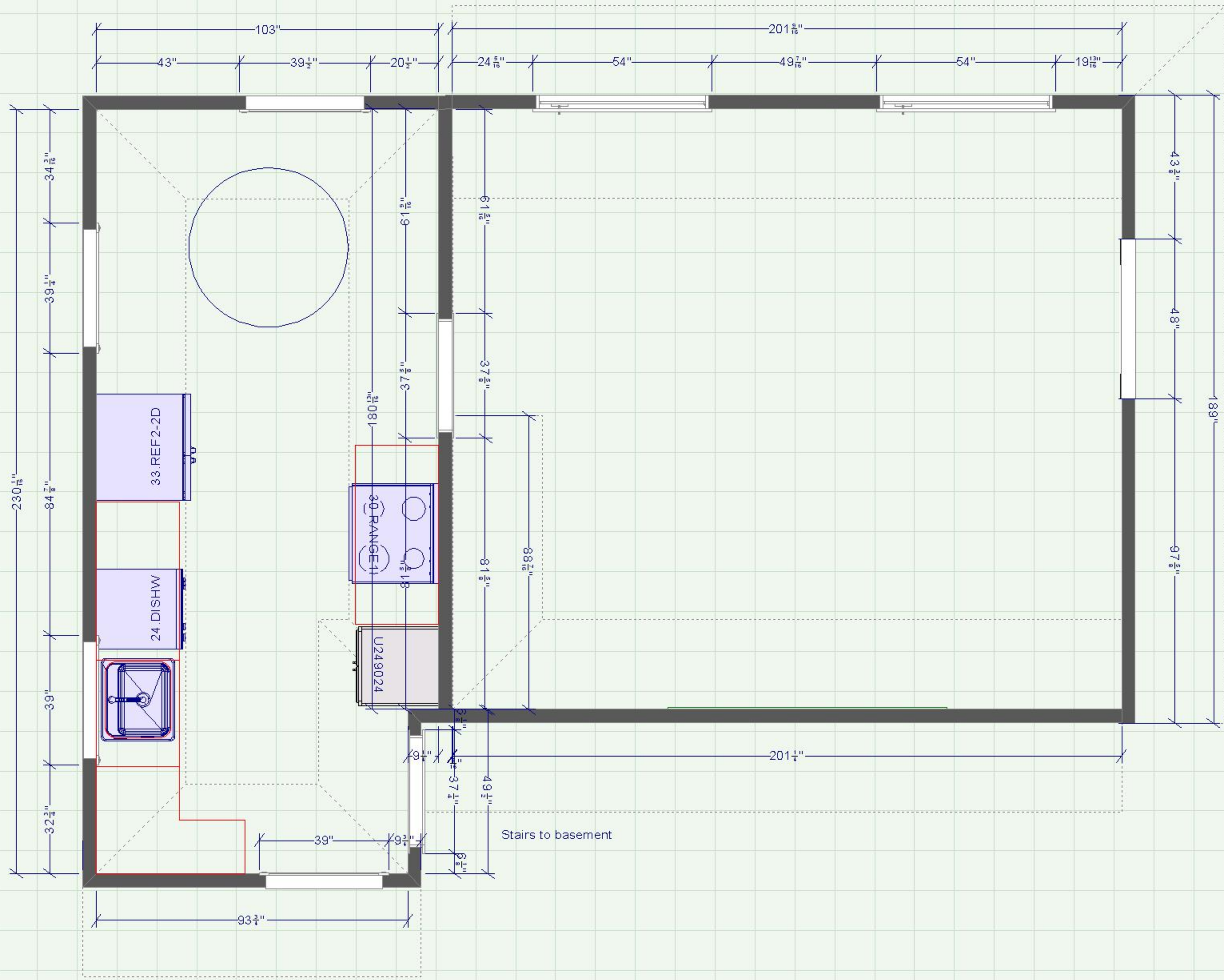


Wellborn 2010-2011 Design Contest Entry

Entry ID: 100335

| # | Customer | Entry | Designer | Photographer |
|--|---------------------------------------|--|---|---|
| 1 | 0001001880 Euro Custom Cabinets | 100335 | Crystal Kennedy crystal@pacificnwcabinetry.com 503.652.1268 | photo art portraits info@photoartportraits.com 503.891.9354 Owner: Entrant |
| Project | | Project Details | | Project Date |
| Theissen | | Small Kitchen (<42 sqft of CounterTops) Type: Remodel Size:230 x 103 | | 06/2010 |
| Series | Door Style | Species | | Finish |
| Premier | Milan | Cherry | | Espresso |
| Description | | | | |
| <p>This young couple had just moved their family of four into a big beautiful old home, but quickly realized the kitchen wasn't going to work for them at all. They are a busy, growing family and spend a lot of time together in the kitchen. The existing layout was too tight and didn't provide enough space for each family member's various activities.</p> <p>Problems/challenges/wants:</p> <ul style="list-style-type: none"> -Kitchen too small, felt closed off from the rest of the home -Inadaquate lighting for kitchen tasks and homework tasks -Space too tight for more than one person -Dated, not functional cabinets that didn't fit with style of home -Wanted more contemporary feel to fit with their clean, modern lifestyle -Wanted a space outside of kitchen for seating and an adjacent space for desk and homework/craft area so the family could be in the same space doing multiple activities -Sustainable products to be used whenever feasible – sustainability was important for this family <p>Solutions:</p> <ul style="list-style-type: none"> -Opened up wall to dining room to make the 2 rooms feel like one. The space felt much bigger and allowed the entire family to be in the same space -Used recycled/eco friendly materials for countertop/floor (reclaimed fir floors, reclaimed end grain butcherblock in the homework/craft area, EcoStone white countertops in the kitchen, Wellborn cabinetry) -Refined materials such as glass tile backsplash, elegant Wellborn Milan Espresso Cherry Cabinets and glass chandelier rounded out the contemporary styling -New LED recessed can lighting and undercabinet lighting -New electric downdraft cooktop gave a low maintenance, low profile cook surface and maintained the open look of the new space -Bold wall mural, textured pendants add style and warmth to the contemporary feel -Pullouts in the base cabinets and a lazy susan in the corner made best use of the lower cabinet space -Lower microwave to keep it off of the countertop -Lowered butcher block countertops in the homework/craft area were more comfortable for seating and playing <p>The new space was a great reflection of this family's clean, contemporary lifestyle ■</p> | | | | |



Foyer and living room

Stairs to basement











Notes:

- 1-3 pullouts in cabinet
- 2-Spice pullout
- 3-Lazy susans (2)
- 4-Build blind corner
- 5-Microwave
- 6-Desk seating
- 7-Open shelving, 1 1/2" thick metal brackets for support
- 8-Down draft range

