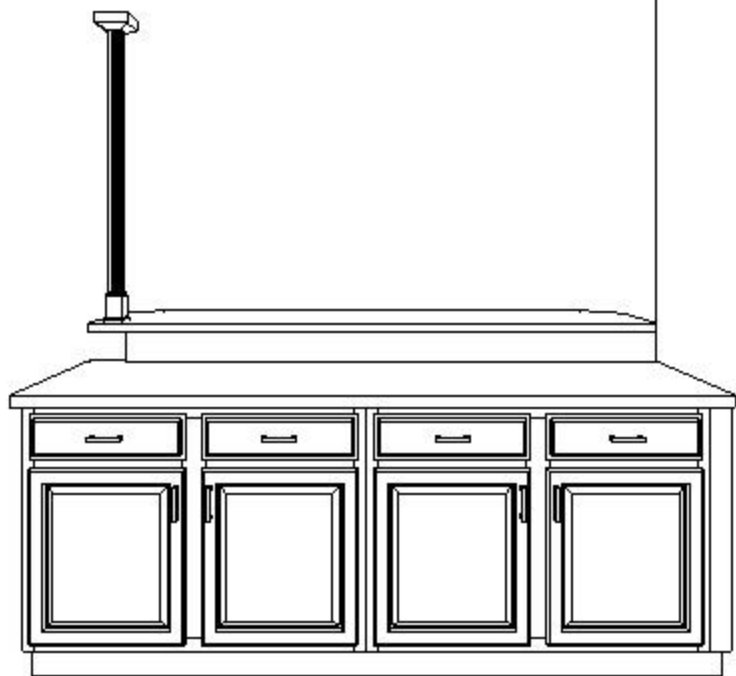
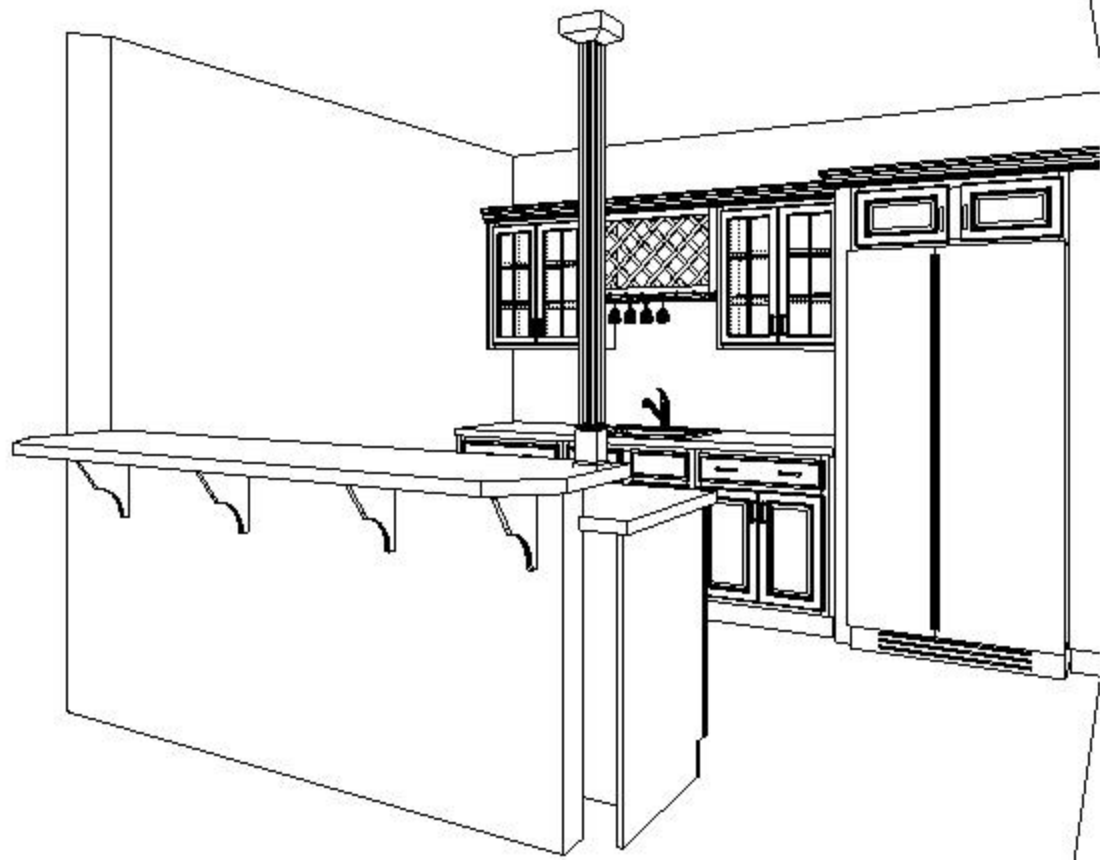


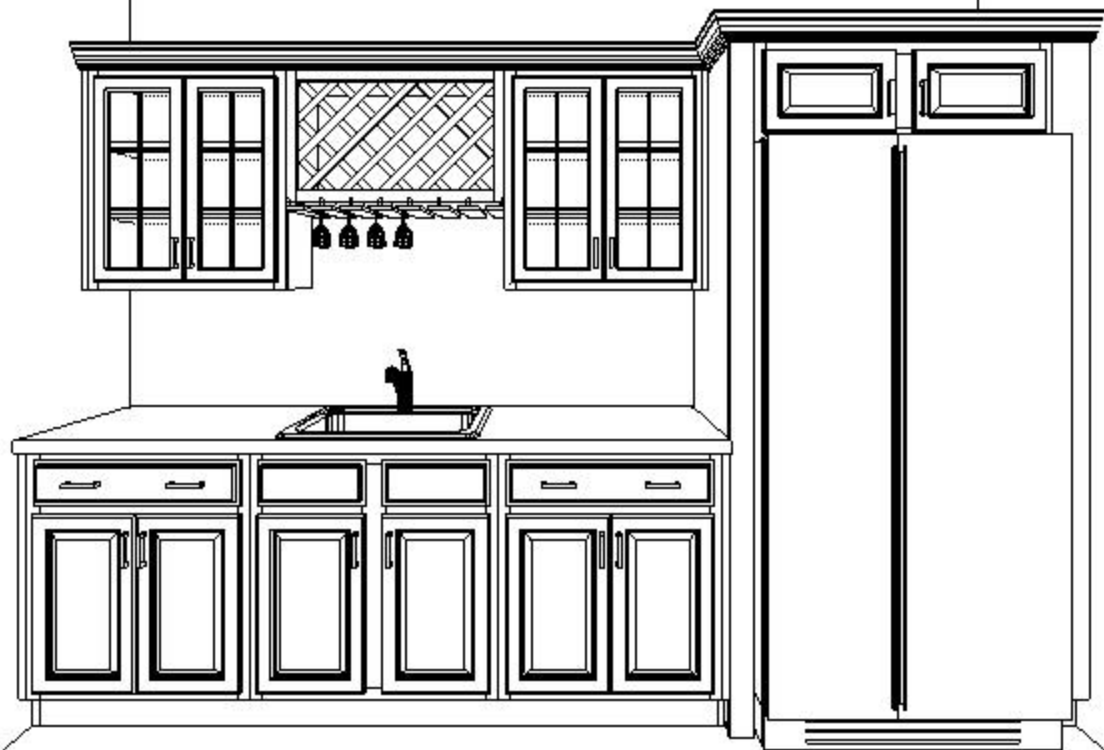
# Wellborn 2010-2011 Design Contest Entry

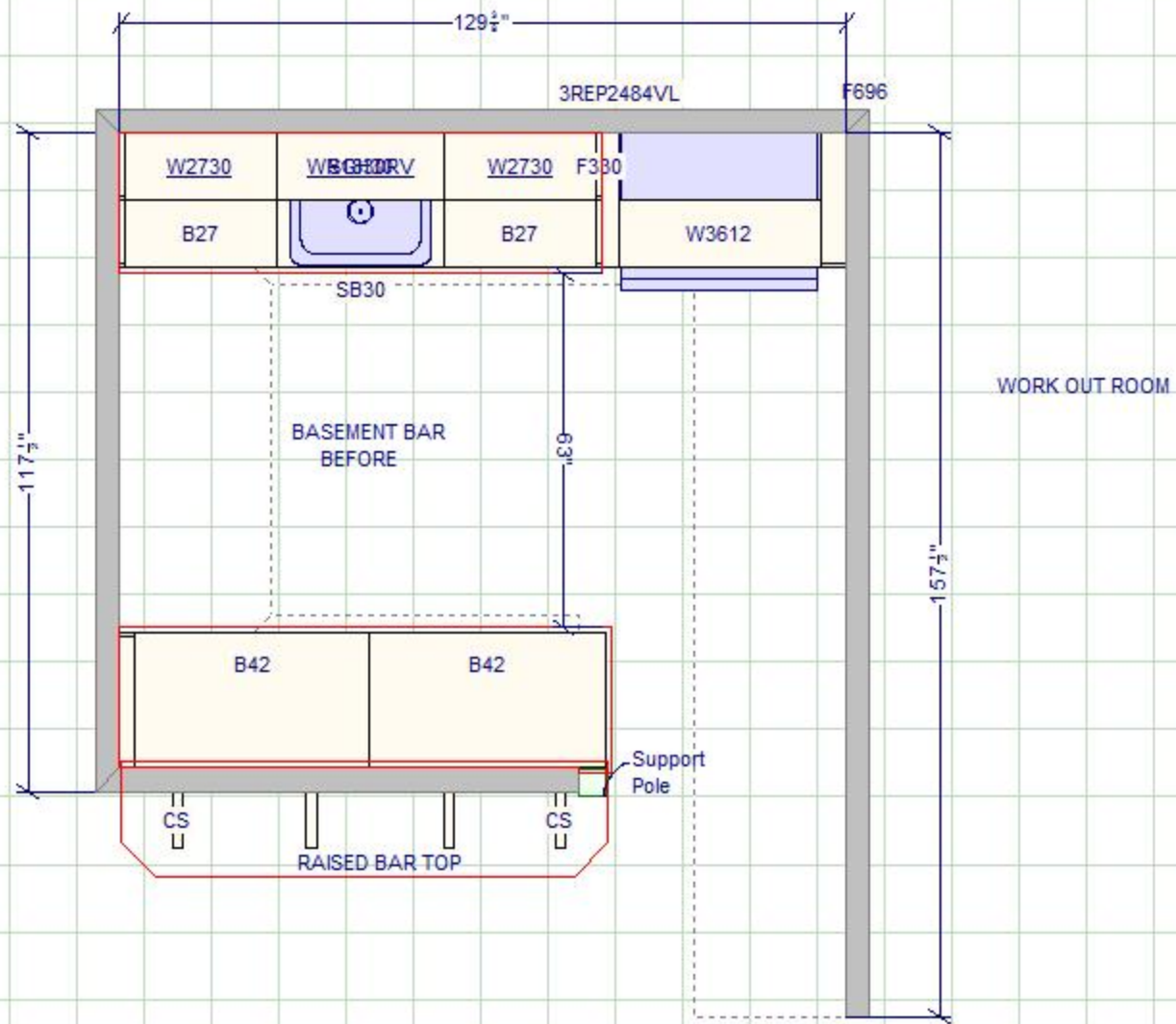
Entry ID: 100278

#	Customer	Entry	Designer	Photographer
1	0001002394 CENTURY HOME & AUDIO SOLUTIONS	100278	Jennifer Lee jennifer@centuryliving.com 502-299-7557	Jason Yan, Century Entertainment and Furnishings jason@cmcloans.com 502-753-4142 Owner: Entrant
Project		Project Details		Project Date
Basement Bar		Other Rooms Type: Remodel Size: 129.375 x 157.5		07/2010
Series	Door Style	Species	Finish	
Premier	Madison Square	Cherry	Dark	
Description				
<p>Client Desires:</p> <ul style="list-style-type: none"> <li>-The Homeowners main goal for their remodeled bar space was for it to look less like a 2nd Kitchen and more like a Bar, one of the homeowners is an executive for one of the area's largest liquor distributors; They wanted something that would be eye catching, timeless, upscale and traditional</li> <li>-They wanted a space that would showcase their collections of wine and liquor</li> <li>-A dedicated prominent location for the TV was requested, for watching local and national sports games</li> <li>-They requested under counter appliances as to not dominate the space, but at the same time showcase what they had to offer in the bar</li> <li>-They wanted to maximize seating around the bar as well, their previous bar could only accommodate seating for 3</li> <li>-Additional special requests were a 15"bar sink, a dishwasher, an ice maker, a lighting feature to illuminate bottles on display and brass bar rail</li> </ul> <p>Aesthetic Challenges:</p> <ul style="list-style-type: none"> <li>-The "Before" Basement Bar was a traditional overlay cabinet in Oak with a dark finish; We chose to do a more traditional full overlay cabinet, Madison Square Cherry in Dark with stacked moldings and custom stained corbels to match accented by traditional brass bar rail and hardware</li> <li>-The "Before" Counter Top was a neutral laminate with an Oak Edge; We chose to do a timeless Venetian Gold 3CM Granite with an Ogee Edge</li> </ul> <p>Structural/Layout Challenges:</p> <ul style="list-style-type: none"> <li>-The Support Pole, was probably our biggest challenge; it was located at the end of a run of cabinets and not camouflaged very well</li> <li>--We integrated "the pole" into the U-Shaped layout making it less noticeable and dressed it up with trims</li> <li>-The Soffit - Measuring 43" ½ Wide by 157 ½ " Long by 12" High needed to stay intact as it houses HVAC equipment along one side of the bar</li> <li>-We were able to achieve visual balance by getting creative with valances, cabinetry, back panels and trim</li> <li>-The generous available space wasn't being utilized to its full potential</li> <li>-We maximized available floor space with a new layout and wall space with cabinetry and open display space; we greatly increased storage and doubled the seating space as well</li> </ul> <p>Summary:</p> <p>Overall the previous bar space consisted of 2 straight runs of cabinetry, was uninteresting and didn't reflect the homeowners tastes ; They wanted something that would be eye catching, timeless and traditional; We gave them a fantastic Cherry Bar with extensive display space, storage space, and a great place to entertain many family and friends in.</p>				



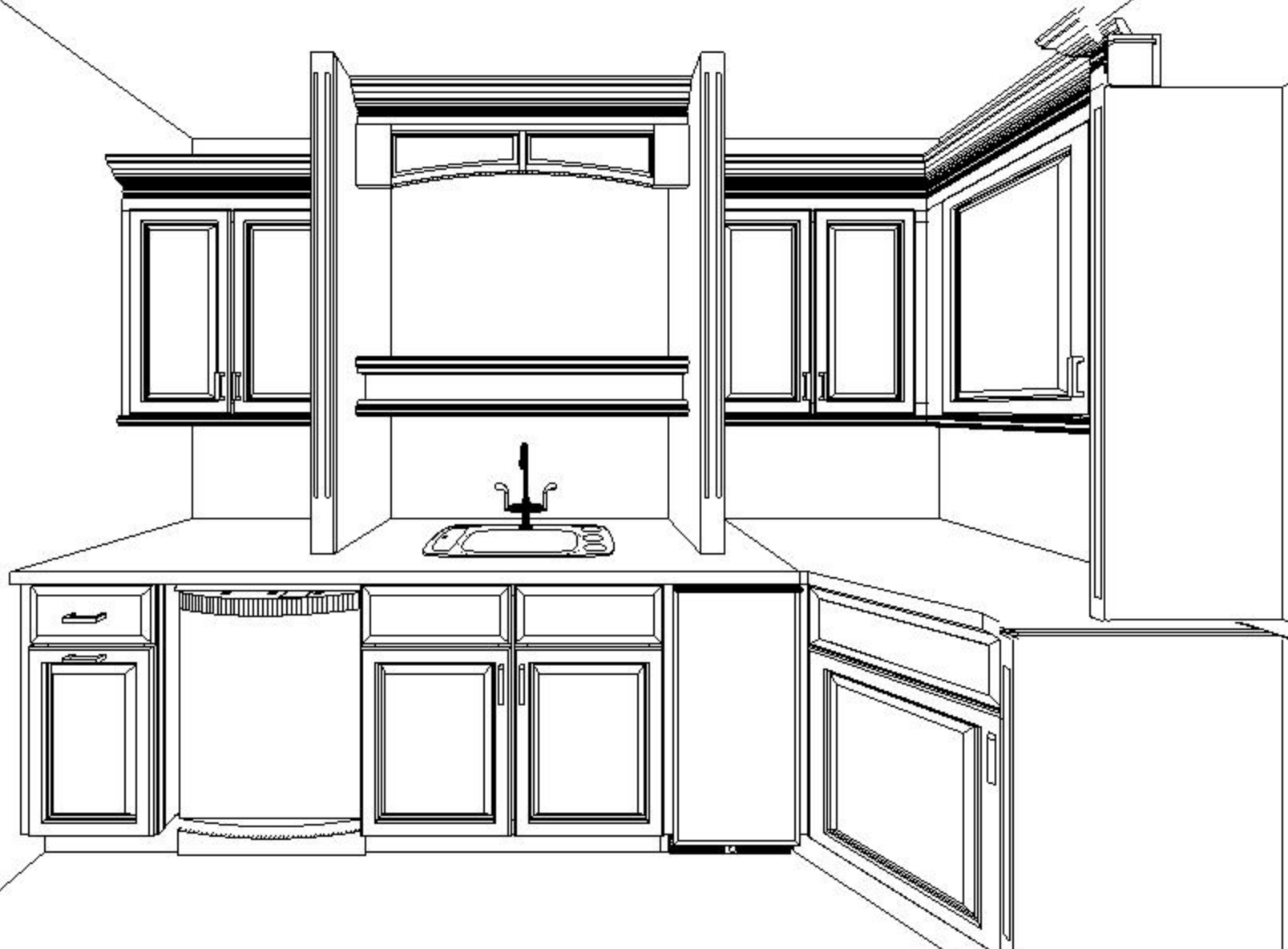


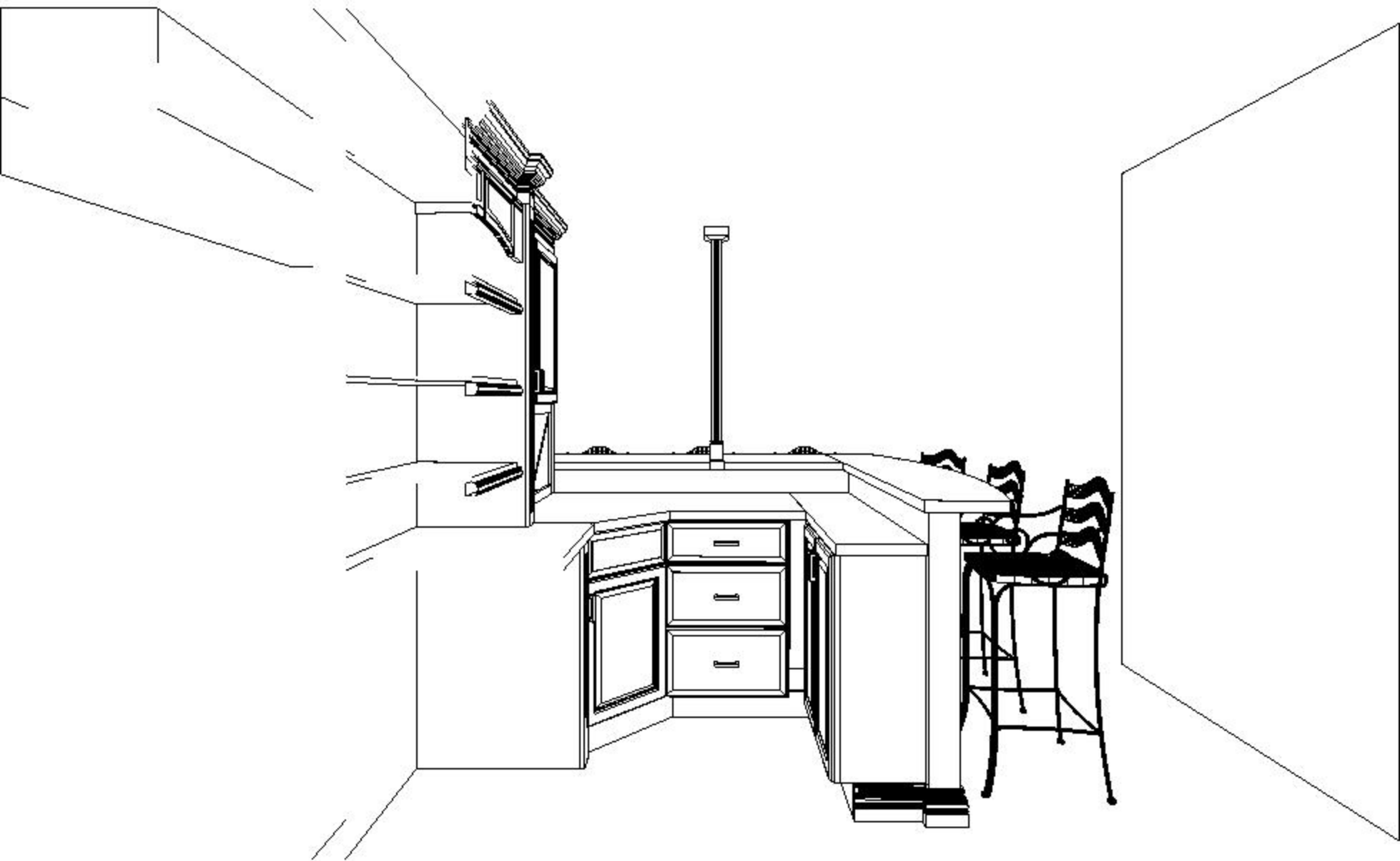




POOL TABLE/GAME SPACE

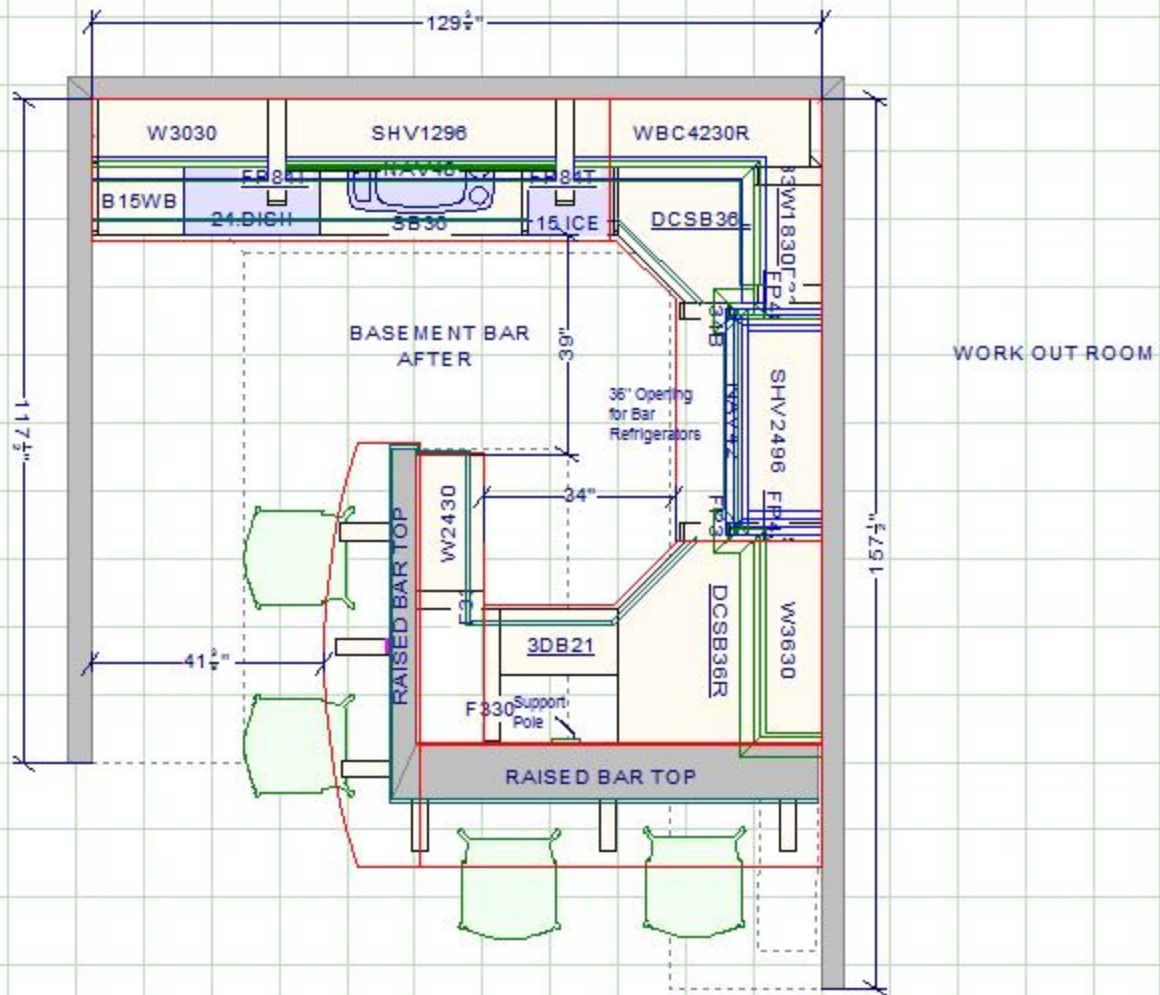
BASEMENT FAMILY ROOM











POOL TABLE/GAME SPACE

BASEMENT FAMILY ROOM







FINLANDIA  
FINLANDIA  
FINLANDIA  
FINLANDIA  
FINLANDIA  
FINLANDIA  
FINLANDIA

el Jimador  
CHIVAS REGAL  
1850 2000  
WOODFORD RESERVE  
el Jimador  
Captain Morgan

FORESTER  
EARLY TIMES  
WOODFORD RESERVE  
EARLY TIMES

Danby

Danby





