
(Dealer Name)

Document of Understanding Special Effects

_____ is proud you have chosen Wellborn Cabinet, Inc. products for your home.
(Dealer Name)

It is our desire that you be completely satisfied with your decision. All hardwoods, being a product of nature, vary from one piece to the next, even from the same tree, each having its own characteristics. Therefore, each piece of wood, each cabinet and each kitchen is unique.

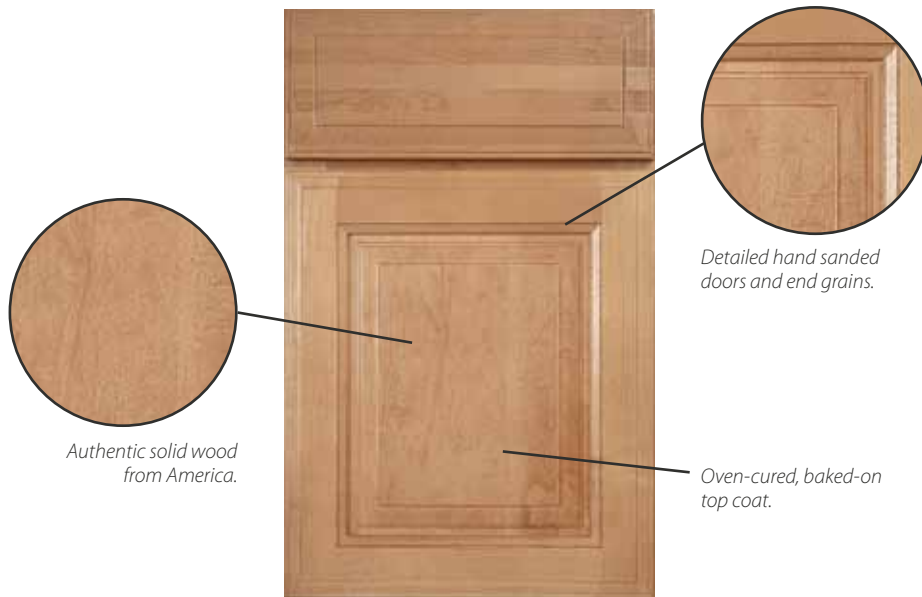
We believe that it is important that you are aware of the special effects used to create

(Finish Name)

The results of these finish techniques are intentional and will vary from one cabinet to the next. As a result, the effects of these techniques in an entire kitchen may be different than those in the individual sample on which you based your selection.

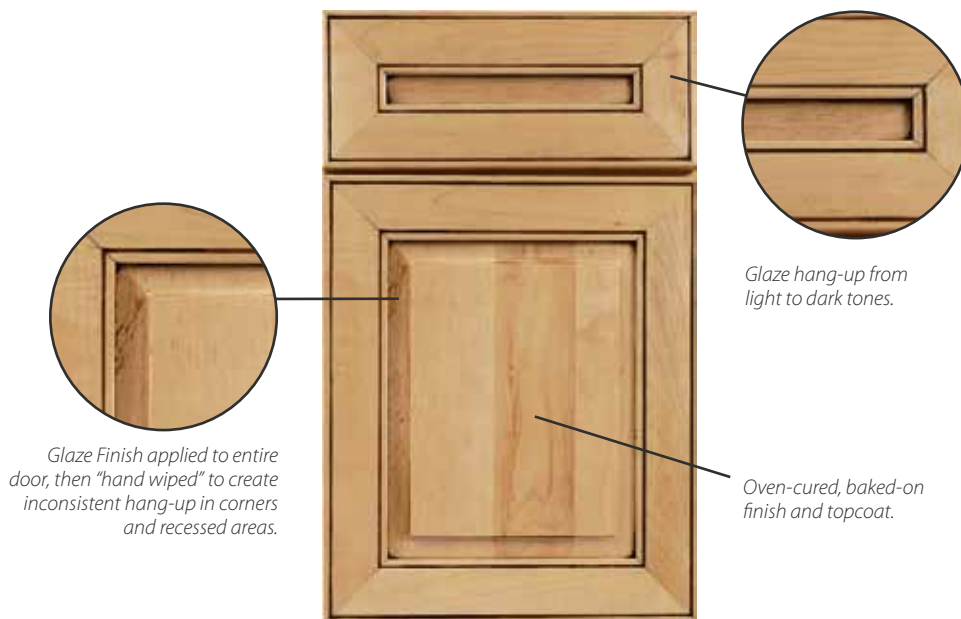
Following are descriptions of the finishing techniques used in many of Wellborn's finishes.

Stained Finishes



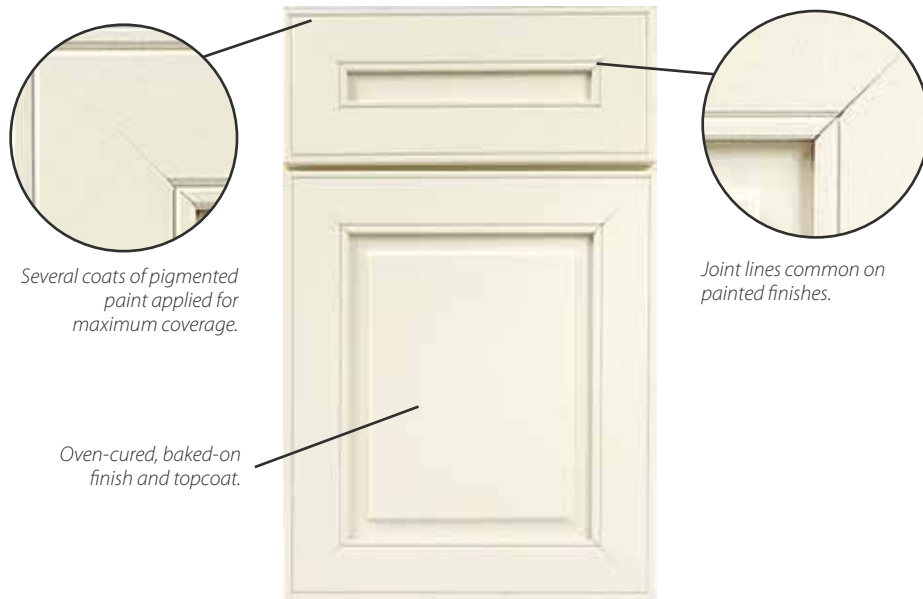
Wellborn's WellGuard Finishing System® is a superb finishing process. The Stained Finishes truly display the natural beauty and characteristics of each individual wood species. The detailed hand sanding and hand rubbed processes result in a high quality finish that enhances the wood grain in each door. A toner may be applied depending on the stain color to equalize natural sap levels. As layers of finish color and sealers are applied, hand sanding continues throughout the process ensuring the best finish in the industry. The final step is a conversion varnish topcoat that is oven-cured creating a tough baked-on long lasting finish.

Stained Finishes with Glaze Technique



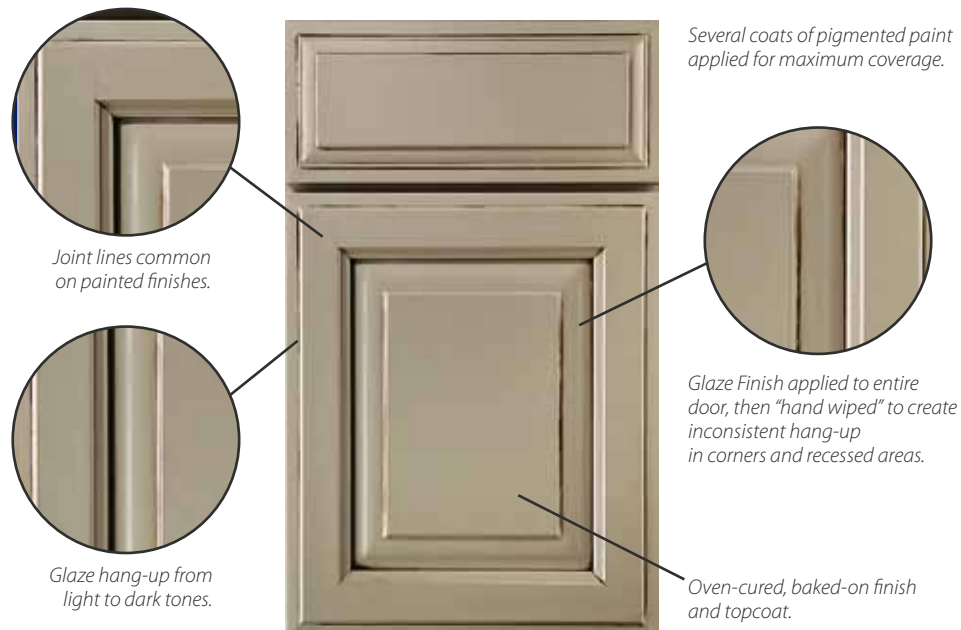
The Glaze Technique on Stained Finishes is created by applying an accent stain over the entire door and then wiping off the glaze leaving a "Hang Up" of light to dark tones in the corners, deep grooves and wood grains creating an all over glazed look. The Glaze Technique purposely creates an uneven, inconsistent look of light to dark tones. This hand rubbed application adds warmth and richness to the wood and results in a unique, one of a kind look on each door. The final step is a conversion varnish topcoat that is oven-cured creating a tough baked-on long lasting finish. These features are acceptable on stained finishes with a glaze technique and are not considered defects. Therefore, these features are not covered under warranty.

Painted Finishes



Painted Finishes are created with several coats of pigmented paint and two coats of sealers. Depending on the wood species chosen, some of the wood grain may show through the paint. Character maple will show more wood grain than standard maple. The natural characteristics of wood create a constant state of expansion and contraction in every door, drawer front and face frame resulting in the visibility of joint lines. These visible joint lines are part of the beauty of painted finishes on natural wood. The final step is a conversion varnish topcoat that is oven-cured creating a tough baked-on long lasting finish. These features are acceptable on painted finishes and are not considered defects. Therefore, these features are not covered under warranty.

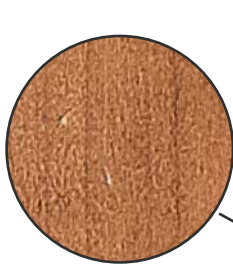
Painted Finishes with Glaze Technique



The Glaze Technique on Painted Finishes is created by applying an accent stain over the entire door and then wiping off the glaze leaving a "Hang Up" of light to dark tones in the corners, deep grooves and wood grains creating an all over glazed look. The Glaze Technique that is applied over Painted Finishes is created with several coats of pigmented paint and two coats of sealers. Depending on the wood species chosen, some of the wood grain may show through the paint. Character maple will show more wood grain than standard maple. The natural characteristics of wood create a constant state of expansion and contraction in every door and drawer front resulting in the visibility of joint lines. These visible joint lines are part of the beauty of painted finishes on natural wood. The final step is a conversion varnish topcoat that is oven-cured creating a tough baked-on long lasting finish. These features are acceptable on painted finishes with a glaze technique and are not considered defects. Therefore, these features are not covered under warranty.

FINISH TECHNIQUES – Wellborn has the following Finish Techniques that create different levels of worn appearances. Each piece on the cabinet will vary in the amount of level and appearance in each effect creating a randomness of appearance. Techniques will be applied to doors and drawer fronts but will not be applied to the cabinet face frame and accessories. Veneer door styles, Milan and Barcelona, will only receive Cottage and SeaSide finish techniques. Some specialty accessories like Open Display Cabinets and Bookcases will receive these effects. Many small mouldings will not receive the Finish Techniques. For your convenience, exclusions are notated in the specification catalog. The Finish Techniques will vary within individual doors; therefore, no two doors will be alike throughout the entire kitchen. These features are acceptable and are not considered defects. Therefore, these features are not covered under warranty.

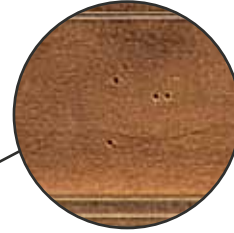
Heirloom



SMALL DENTS –

A physical technique of randomly striking the wood surface with a tool to create indentations that mimic the look of aged wood. Small Dents are larger than Worm Holes and will collect a glaze in varying amounts when applied.

- Glaze Required for Maple, Character Maple, Oak and Hickory
- Glaze Optional for Cherry and Character Cherry



WORM HOLES –

A physical technique of randomly placing small round holes that mimic the look of insect penetration that occurs naturally in trees and harvested wood. Worm Holes are smaller than Small Dents and will collect a glaze in varying amounts when applied.

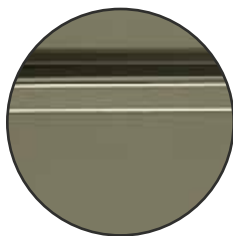


BURNISHING –

A technique where the profile edges have been darkened to create an antiqued effect.

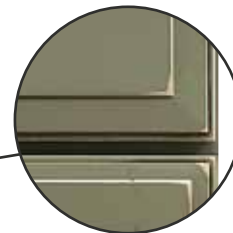
The Heirloom Technique is available on doors, drawer fronts, the face frames of Open Display Cabinets and Bookcases and specified mouldings. All other face frames and accessories will not receive this technique. These features are acceptable with the Heirloom Technique and are not considered defects. Therefore, these features are not covered under warranty.

Vintage



Detailed hand sanded doors and end grains.

- Glaze Required for Maple, Character Maple, Oak and Hickory
- Glaze Optional for Cherry and Character Cherry



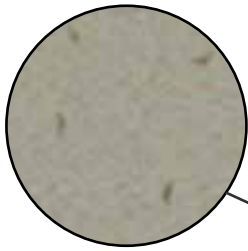
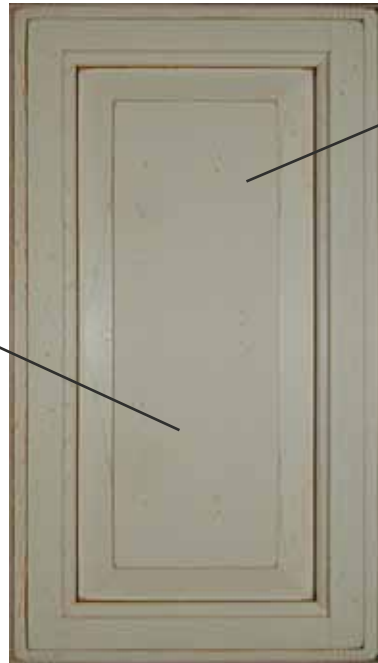
RUB THROUGH –

A sanding technique used to randomly expose an undercoat of natural wood tone on corners and edges.

Oven-cured, baked-on finish and topcoat.

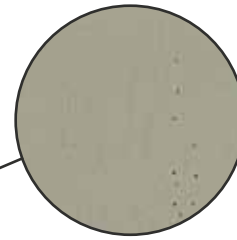
All doors with a flat center panel will not receive the Vintage technique on the center panel. The worn edges will vary within individual doors and throughout the entire kitchen. These features are acceptable with the Vintage Technique and are not considered defects. Therefore, these features are not covered under warranty.

Carriage



SMALL DENTS –

A physical technique of randomly striking the wood surface with a tool to create indentations that mimic the look of aged wood. Small Dents are larger than Worm Holes and will collect a glaze in varying amounts when applied.



WORM HOLES –

A physical technique of randomly placing small round holes that mimic the look of insect penetration that occurs naturally in trees and harvested wood. Worm Holes are smaller than Small Dents and will collect a glaze in varying amounts when applied.



RUB THROUGH –

A sanding technique used to randomly expose an undercoat of natural wood tone on corners and edges.

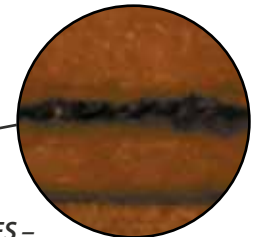
- Glaze Required for Maple, Character Maple, Oak and Hickory
- Glaze Optional for Cherry and Character Cherry

Olde World



BURNISHING –

A technique where the profile edges have been darkened to create an antiqued effect.



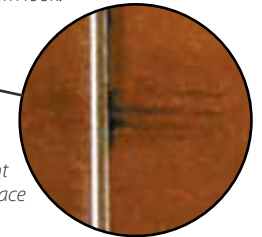
CARVED EDGES –

A technique where small areas of the wood surface are chiseled out on door edges and corners meaning to create a high level of worn look.



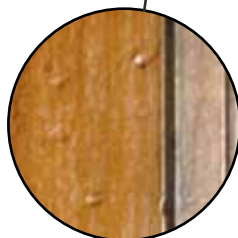
RASPING –

A physical technique using a metal scrapper called a rasp which runs over the edges and raised details to mimic severe wear.



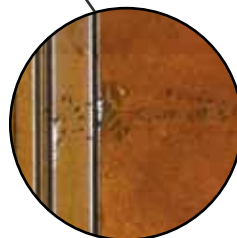
DRY BRUSHING –

A technique applying a very dark stain to highlight the distressing on the surface of the wood.



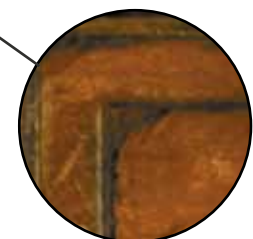
MEDIUM DENTS –

A physical technique of randomly striking the wood surface with a tool to create indentations that mimic the look of aged wood. Medium Dents are larger than Worm Holes and will collect a glaze in varying amounts when applied.



WORM HOLES –

A physical technique of randomly placing small round holes that mimics the look of insect penetration that occurs naturally in trees and harvested wood. Worm Holes are smaller than Small Dents and will collect a glaze in varying amounts when applied.



RUB THROUGH –

A sanding technique used to randomly expose an undercoat of natural wood tone on corners and edges.

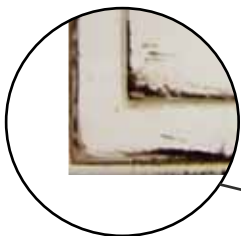
- Glaze Required for Maple, Character Maple, Oak and Hickory
- Glaze Optional for Cherry and Character Cherry

Antique

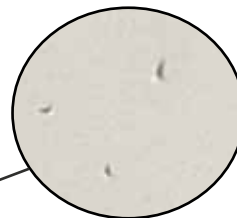


BURNISHING –

A technique where the profile edges have been darkened to create an antiqued effect.

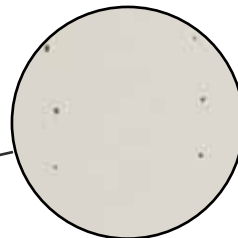


RUB THROUGH – *A sanding technique used to randomly expose an undercoat of natural wood tone on corners and edges.*



SMALL DENTS –

A physical technique of randomly striking the wood surface with a tool create indentations that mimic the look of aged wood. Small Dents are larger than Worm Holes and will collect a glaze in varying amounts when applied.



WORM HOLES –

A physical technique of randomly placing small round holes that mimics the look of insect penetration that occurs naturally in trees and harvested wood. Worm Holes are smaller than Small Dents and will collect a glaze in varying amounts when applied.

- Glaze Required for Maple, Character Maple, Oak and Hickory
- Glaze Optional for Cherry and Character Cherry

SeaSide



BURNISHING –

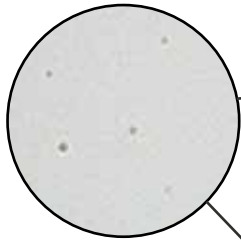
A technique where the profile edges have been darkened to create an antiqued effect.



DRY BRUSHING – *A technique applying a very dark stain to highlight the distressing on the surface of the wood.*

- Available on Bleu, Divinity, Honey Butter, Pebble and Sage Paints
- Available on Maple, Character Maple, Oak and Hickory

Cottage



SPATTER –

A technique where a transparent color is flicked across the surface producing inconsistent spatter on the stained or painted surface.



- Available on Crème, Divinity, Honey Butter, Pebble, Sandstone and Vanilla Paints

These features are acceptable on finishes with the Cottage Technique and are not considered defects. Therefore, these features are not covered under warranty.

Special Effects

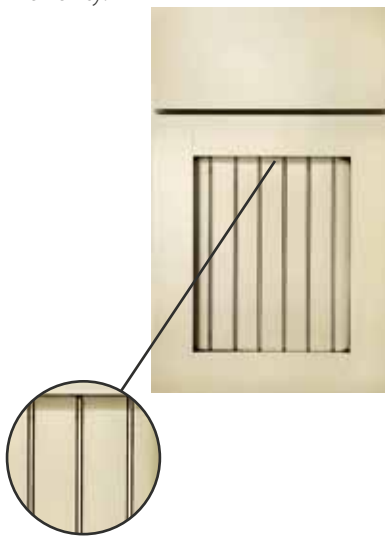
TICKING

Oak is an open grain and therefore the Glaze Technique will hang up in all open grain areas of the door, which will appear as “ticking.” These features are acceptable with Specialty Finishes on oak and are not considered defects. Therefore, these features are not covered under warranty.

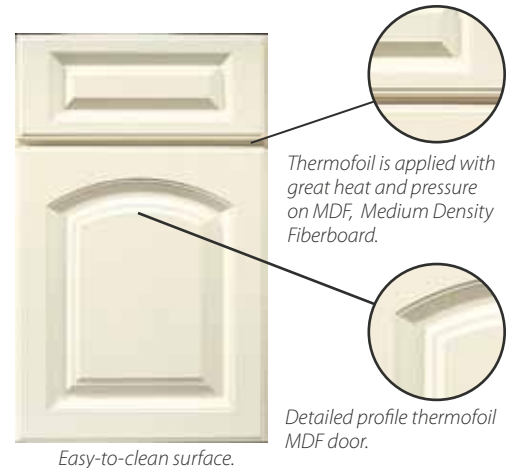


GLAZING ON BEAD BOARD

Door styles with bead board grooves retain more stain in all finishes, resulting in a darker color in the grooves. These features are acceptable. Therefore, these finishes are not covered under warranty.



Thermofoil



Thermofoil is applied with great heat and pressure on MDF, Medium Density Fiberboard.

Detailed profile thermofoil MDF door.

Easy-to-clean surface.

Thermofoil doors are created by pressing MDF (Medium Density Fiberboard) with a high quality foil that has a lightly textured effect. Foil is applied with an intense heat process and secured with durable glue to the MDF substrate to ensure a clean smooth surface. The face frame of the cabinets with thermofoil doors will be painted to match the door color. It is recommended that a Delamination Shield be placed between freestanding base ovens and adjacent cabinets during installation.

UNFINISHED CABINETS – This option is available for all door styles in the Premier Series and Estate except MDF and thermofoil door styles. Cabinet doors, drawer fronts and face frames will be unfinished. All open cabinets, like bookcases, will have an unfinished interior. This product is sanded at the factory; however, it should be sanded prior to field applying a finish to remove any residue that may be on the surface. Unfinished cabinets lack the protection of a finish coat and are more susceptible to damage from variations in temperature and humidity, and therefore are not covered under warranty. **Unfinished cabinets void all warranty!**

Solid Wood Doors



Solid wood doors are affected by temperature and humidity and will expand or contract, depending on the installed location. These conditions are inherent in all wood products and will cause a light line to appear at edges of the center panel. This can easily be touched up and can be controlled by regulating humidity. This characteristic is the result of environmental factors beyond manufacturer's control and is not considered a defect. Therefore, it is not covered under warranty.

Any product that is exposed to moisture will show separation at the joints.

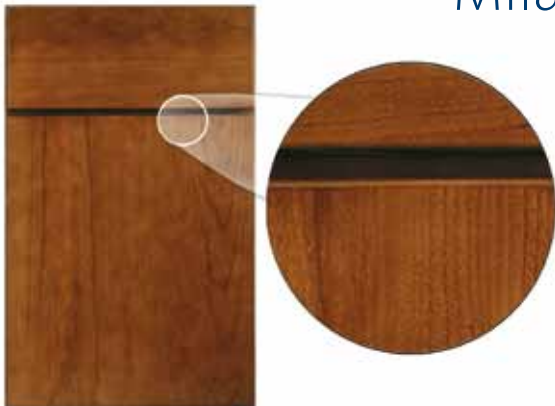
Light lines at edges of center panel are common on solid wood doors

Veneer Center Panels



Veneer is thin slices of wood that are glued to furniture board. Since no two trees are exactly alike and even the same tree will have variations due to limbs and growth interruptions, there will be differences in the grain and color of the wood. Our veneer products are made from real wood and will have the same grain patterns, color variations and textures as the wood the veneer is made from. Therefore, each piece of veneer, each cabinet and each kitchen will be unique and beautiful.

Milan and Barcelona



The soft edges of the Milan and Barcelona doors are created by applying a 1/8" thick solid wood edge. Certain stains may show a slight line between the door panel and wood edge. This is an acceptable level of quality for these doors and finish combinations.

Miter Doors



Miter doors will show separation and peeling in the joints at the door corners. This characteristic is the result of environmental factors beyond manufacturer's control and is not considered a defect. Therefore, this feature is not covered under warranty.

Character Cherry

Characteristics:

Character cherry has very different characteristics than standard cherry and other woods giving it an overall distinctive rustic appearance. Its characteristics are brought out by randomly occurring, variously sized knots, worm holes and tracks, gum pockets and streaks, mineral stains and streaks, burls, blemishes, sapwood, and non-structural splits. The amount of character marks will vary from each piece of wood making each kitchen unique. Character cherry will include wood color differences that can range from pink to dark brown with a flowing grain pattern.

Knot Specifications:

While knots in character cherry are more rare than in character maple, it is possible to find open and closed knots with some knots possibly located in the center panel of door and drawer panels. Cluster knots could also be a feature. Open knots located in the center panel of the door and drawer panels are acceptable, though they must be structurally sound. Sound or closed knots are acceptable up to 2½" in diameter. Knots with visible openings entirely through the wood must not exceed ½." Some knot locations may affect hardware placement.

Accessories:

Other parts of the cabinet, like door stiles, rails and mouldings, will not include knots, but may show character cherry's other natural features. However, it will be uncommon to find all markings on any single piece. Door parts are chosen at random with the appearance of each individual door varying widely from a great amount of character to relatively clear cherry. It could occur that a part will be clear cherry as well. Cabinet face frames, end panels, and open cabinets (such as bookcases and other components) will not include knots; however they may appear with grain characteristics of character and/or clear cherry.

The color of character cherry will darken and mellow over time. This change is more evident in light finishes and is most noticeable within the first 6 months. Exposure to strong light sources, such as the sun, will accelerate this process. The natural characteristics of character cherry, including variations in grain patterns and color, are not considered reasons for product replacement and are not covered under the Warranty Program. We recommend viewing a door sample prior to ordering.



Dark Finishes on Character Cherry

Dark finishes will hide the majority of character features. Large open knots and some splits, if present, may still be partially visible. Character features are more noticeable on Natural or lighter toned finishes.



Character Maple

Characteristics:

Character maple has very different characteristics than standard hard maple and other woods giving it an overall distinctive rustic appearance. Its characteristics are brought out by randomly occurring, variously sized knots, pin holes, worm holes and tracks, gum and bark pockets, sugar tracks, heartwood and mineral streaks. The amount of character marks will vary from each piece of wood making each kitchen unique. Character maple will include wood color differences caused by variations found in minerals in the soil.

Knot Specifications:

It will be common to find open knots and bark pockets. Some knots may have small holes through the center panel. Character features include knots that may be located in the center panel of the door and drawer panels. Open knots located in the center panel of the door and drawer panels are acceptable, though they must be structurally sound. Sound or closed knots are acceptable up to 2½" in diameter. Knots with visible openings entirely through the wood must not exceed ½." Cluster knots could also be a feature.

Accessories:

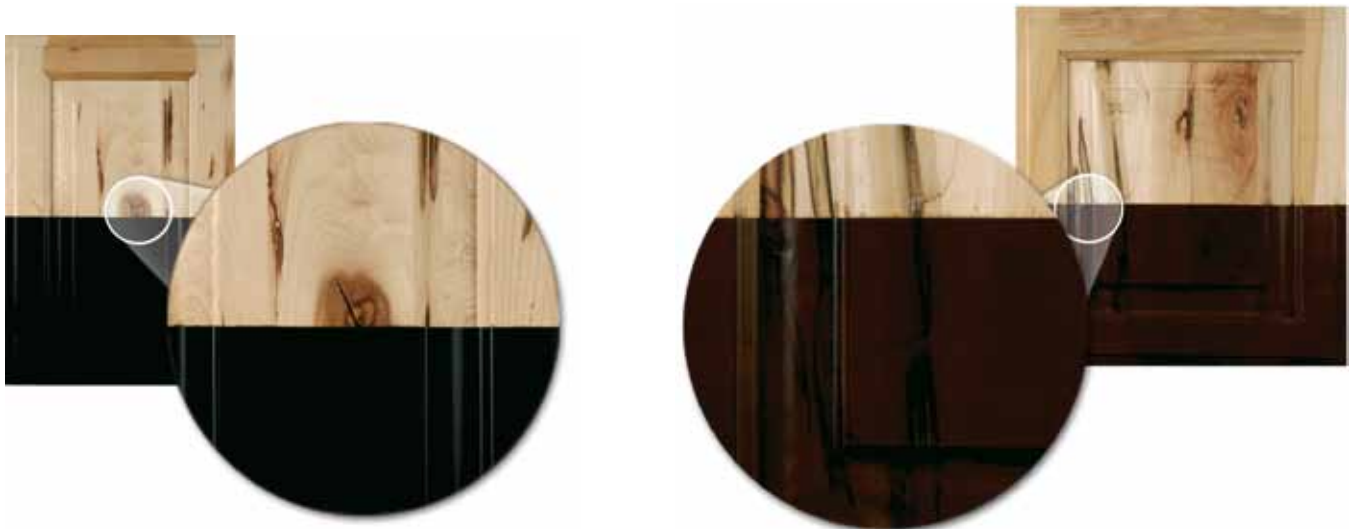
Other parts of the cabinet like door stiles, rails and mouldings, will not include knots, but may show character maple's other natural features. The Bristol door style is the only exception to this due to its wide shaker stiles and rails and will have some knots located in the stiles and rails of the door. However, it will be uncommon to find all markings on any single piece. Door parts are chosen at random with the appearance of each individual door varying widely from a great amount of character to relatively clear maple. It could occur that a part will be clear maple as well. Cabinet face frames, end panels and open cabinets (such as bookcases and other components) will not include knots, however they may appear with grain characteristics of character and/or clear maple.

The natural characteristics of character maple, including variations in grain patterns and color, are not considered reasons for product replacement and are not covered under the Warranty Program. We recommend viewing a door sample prior to ordering.



Dark Finishes or Paints on Character Maple

Dark stains and paints will hide the majority of character features. Large open knots and some splits, if present, may still be partially visible. Character features are more noticeable on Natural or lighter toned finishes.



Dealer Comments:

*Please sign below indicating that you have read the above statements and are aware that the effects are random and will be found throughout your kitchen, however not on every cabinet. Your signature indicates that _____
(Dealer Name)
nor Wellborn Cabinet, Inc. will be held responsible in the event that these characteristics are found to be less desirable than expected once installed in your home.*

Customer Signature

Customer Name (Please Print)

Date