



OVERLAY CABINETS CONSTRUCTION

WellGuard Finishing System®

Estate's 24-step WellGuard Finishing System® has melamine enriched catalyzed sealer and top coats providing a furniture like luster that shines deep from within the wood. Cabinet components are hand sanded to prepare the surface for staining. Estate hand rubs the stain to enhance the natural wood grain. Three coats of finish, including two coats of high moisture resistant sealers and one top coat of high molecular weight synthetic catalyzed varnish, result in a durable finish. Natural finishes receive two coats of sealer and one coat of top coat.

Face Frames

¾" x 1¼" Kiln-dried solid wood stile and rail members. The center stiles are ¾" x 3½" solid wood. On all corner base and corner wall cabinets, the center stiles are ¾" x 6½" solid wood. 48" Corner base has 9½" center stile. All face frame joints are precisely aligned with blind mortise and tenon, glued and stapled at all joints.

End Panels

¾" Plywood with unfinished exterior and natural finished interior is resistant to household chemicals. End panels are machined to accept tops, bottoms and shelves. Finished Matching End (FME) option is available.

Wall Cabinet Tops and Bottoms & Base Cabinet Bottoms

¾" Natural finished plywood. A dado joint, glue and staples are used to attach the top and bottom into face frames and end panels.

Backs

All backs are ½" plywood with natural finished interior. Cabinet backs are glued and stapled into end panels, tops and bottoms.

SHELVES

Wall Cabinets – Adjustable Shelves

All wall cabinet shelves are adjustable and made of ¾" natural finished plywood. The shelves are resistant to water and household chemicals. The front edge of the shelf is banded with wood grain edge banding. The cabinet sides are drilled for shelf supports which are adjustable at 32mm increments.

Base Cabinets – Adjustable Shelves

All base cabinets have fully adjustable ¾" natural finished plywood shelves. The shelves are ¾" depth. The front edge is banded with a wood grain edge banding.

Sliding Shelves

¾" x 3¾" Solid hardwood drawer in natural finish with finished ¾" plywood drawer bottom and dovetail construction with full extension undermount soft closing slides.

Base Toe Board

The toe kick for base, vanity, utility and oven cabinets is ½" x 4½" unfinished plywood. Toe kicks have captive construction.

DRAWERS

Sides, Sub-Front, Back and Bottom

¾" Solid hardwood drawer in a natural finish and dovetail construction with ¾" finished plywood drawer bottom that is dadoed into all sides. The full depth drawer box is screwed to the drawer front with large washer head screws that allow for adjustment. The drawer has a 75 lb. weight capacity.

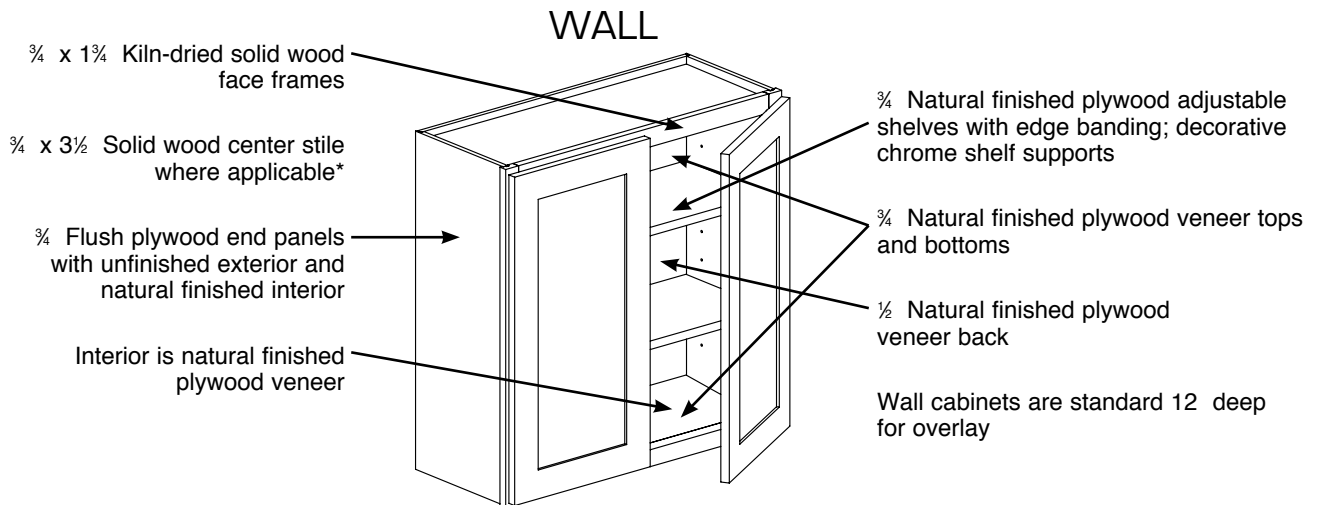
DRAWER SLIDES

Estate drawers have full extension undermount soft closing slides featuring Blumotion that provide smooth, easy operation. Drawer slides are fitted into a bracket mounted to the cabinet back. The bracket allows horizontal drawer adjustability.

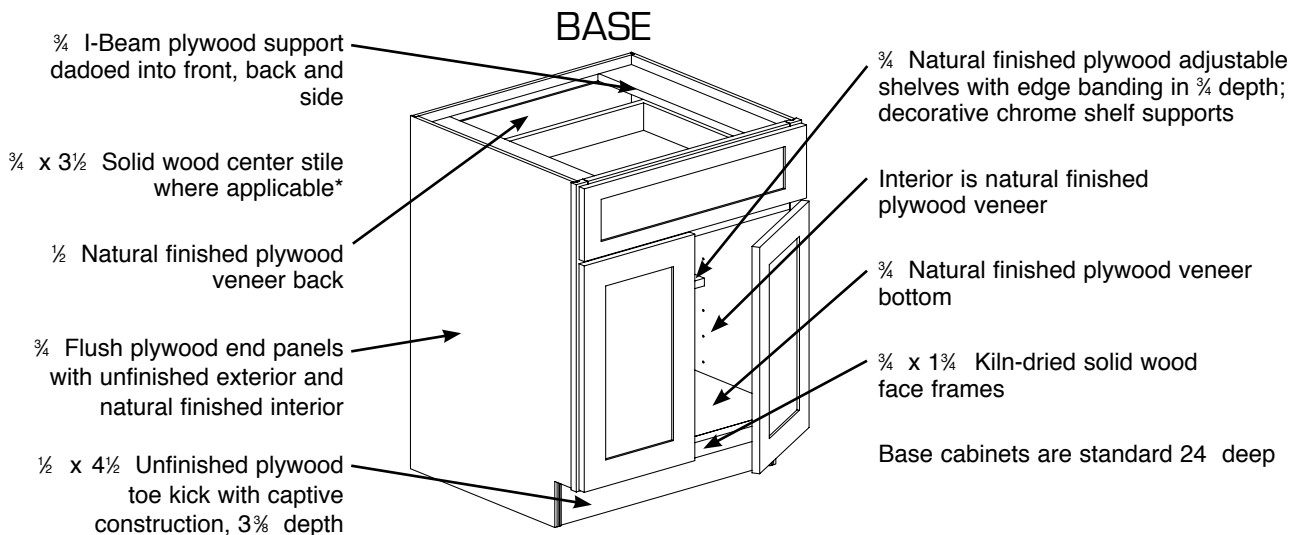
HINGES

Hinges are 6-way adjustable, satin nickel concealed hinge design with a self close feature.

OVERLAY CABINETRY CONSTRUCTION



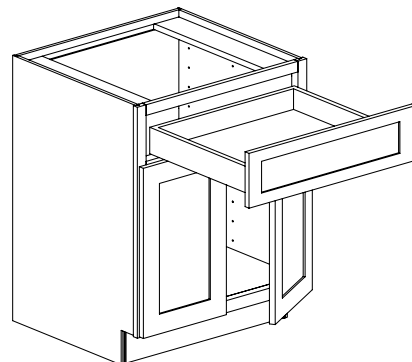
* Without center mullion is standard on cabinets 30 -36 wide
 Note: Overlay cabinets with doors will have soft close installed standard



* Without center mullion is standard on cabinets 30 -36 wide
 Note: Overlay cabinets with doors will have soft close installed standard

DRAWERS

$\frac{3}{4}$ Solid hardwood drawer in a natural finish with a $\frac{3}{16}$ natural finished maple veneer drawer bottom, dovetail construction and full extension drawer slides featuring soft close with Blumotion. The soft close feature allows for a smooth quiet drawer that prevents rebounding and keeps items from shifting.





OVERLAY CABINETS CONSTRUCTION (continued)

Quick Reference Construction Chart		STANDARD CONSTRUCTION	UPGRADE OPTIONS	
Feature	Description		FME	FE
Drawers	¾" Solid hardwood drawer sides, sub-front & back with dovetail construction	•		
Drawer Bottom	¾" Natural finished plywood bottoms	•		
Drawer Slides	Full extension drawer slides featuring soft close with Blumotion (FXCC)	•		
Shelves	¾" Plywood adjustable shelves, front edge banded	•		
Sliding Shelves	¾" Solid hardwood drawer in natural finish with finished ¾" plywood drawer bottom and dovetail construction with full extension undermount soft closing slides	•		
Tops & Bottoms*	¾" Plywood	•		
Doors	Solid wood raised/reversed flat panels	•		
End Panels	¾" Plywood end panels with unfinished exterior and natural finished interior	•		
	¾" Plywood end panels with matching finished exterior and natural finished interior		★	
	Functional End replaces end panel with a functional door			★
Toe Kick	½" x 4½" Unfinished plywood toe kick with captive construction	•		
Face Frames	¾" x 1¾" Solid wood. Center stiles are ¾" x 3½". Corner wall and base center stiles are ¾" x 6½". 48" Corner base is ¾" x 9½".	•		
Backs	½" Plywood	•		
I-beam	¾" Plywood	•		
Hinges	6-way adjustable concealed	•		

* Refers to wall cabinet tops only.

• - Standard ★ - Upgrade